

ZWCAD Reseller

**ZW**SOFT  
**ZWCAD SOFTWARE CO.,LTD.**

Add: Rm.508, No.886, Tianhe North Rd.,  
Guangzhou 510635, P.R. China  
Tel : 86-20-3825 9726  
Fax: 86-20-3828 8676  
Email: sales@zwcad.com  
Http://www.zwcad.org

All trademarks, trade names or company names referenced herein are used for identification only, and belong to their respective holders.  
Copyright 2010 ZWCAD Software Co., Ltd. All rights reserved. One who makes use of or reproduces the work without permission of the copyright holder is banned by law.

 Powered by IntelliCAD Technology Consortium

**ZWCAD**™  
Reliable CAD for 2D&3D Design



www.zwcad.org

**ZWCAD 2010**

**Faster Speed, Better Design**



## Table of Contents

Company Introduction	1
ZWCAD 2010	3
Compatibility	3
Drafting & Detailing Features	4
Management Features	5
Collaboration Features	7
Customization & Programming	8
What's New in ZWCAD 2010	9
Industries & Customers	10
Service & Support	13
Support Plans	13
Support Channels	13
FAQ	14
Event Gallery	15

## → ZWSOFT is the CAD Software Specialist

ZWSOFT (ZWCAD Software Co., Ltd.) is committed to providing the most reliable and outstanding CAD solutions for its customers. Our products meet the needs of drafters across the 2D and 3D design industries, including AEC (architecture, engineering, construction), mechanics, manufacturing, and electronics. In short, for anyone who creates or uses CAD drawings.

Founded in 1998, ZWSOFT is located in Guangzhou, China, with branches in Beijing, Shanghai, and Wuhan. Today it employs about 360 staff and is supported by an international network of highly skilled strategic partners, distributors, and resellers.



## → Strong Investment in Technological Innovation

Since inception, ZWSOFT's top priority has been to invest in technological innovation:

- ◆ Now, 150 technical and R&D engineers are committing themselves to the technological development of ZWCAD.
- ◆ ZWSOFT cooperates with many well-known organizations:

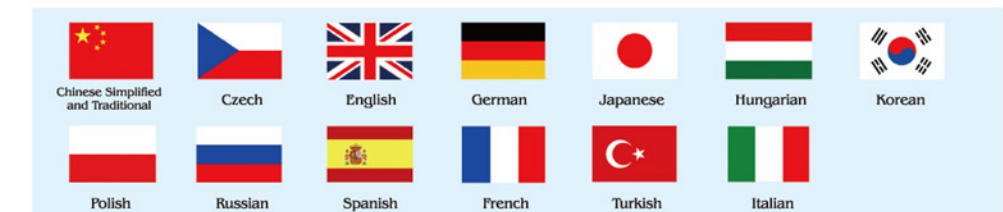


- ◆ ZWSOFT receives guidance for its technological development from the needs expressed by 180,000 users around the world.
- ◆ ZWSOFT applies advanced approaches to manage its research and development, such as Automated Test System and CMMI Management Approach.

## → Strong Presence in the International Marketplace

ZWSOFT is not only successful in its home country of China, but is making great progress in international markets as well.

- ◆ ZWCAD is now available in 14 languages:



- ◆ During 2009, ZWSOFT and its partners attended a series of overseas exhibitions and seminars to showcase its customized CAD solutions to industry professionals, including:
  - ZWCAD 2009 Launch Seminars in UAE, Serbia, Turkey and many other countries
  - Participation in international exhibitions, e.g., Hannover Messe 2009 in Germany, Metaltech in Malaysia, DMS in Japan, and so on.
- ◆ ZWCAD is now proving competitive in over 80 countries, with 180,000 users throughout the world.





## ➔ ZWCAD 2010 - Faster Speed, Better Design

ZWCAD 2010 is a compatible, efficient, interactive, and customizable CAD platform for 2D and 3D design. With ZWCAD 2010, you are assured of

- ◆ Unrivaled compatibility with AutoCAD® & Windows® Operating Systems
- ◆ Effective implementation of your ideas through drafting and detailing
- ◆ Boosted productivity with efficient management of your drawings and their content
- ◆ Smoothed communications with team members and clients
- ◆ Flexible customization with an adaptable user interface and powerful APIs.

## ➔ Ensuring Compatibility with Mainstream CAD&OS

### □ DWG support

ZWCAD's native file format is DWG, so it can open, edit, and save any existing DWG file generated by AutoCAD from version 2.5 to 2009 without conversion or data loss.



### □ Commands and Aliases

ZWCAD's commands and aliases are also compatible with AutoCAD. ZWCAD can export and import the MNU, MNS, and PGP files that define menus, toolbars, and aliases customized in AutoCAD.

### □ Friendly User Interface

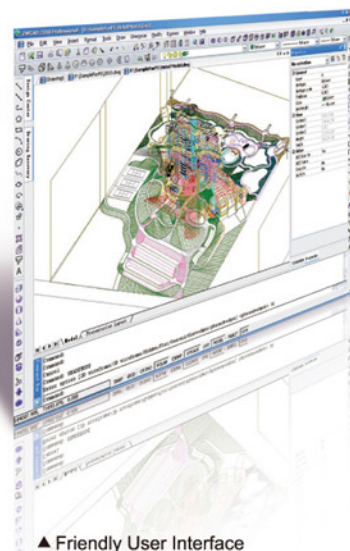
ZWCAD has seamless Microsoft Windows integration. It arranges menus, toolbars, the command line, the drawing area, the properties palette, and dialog boxes in a style that conforms to the expectations of users. This lets AutoCAD-trained users begin working with ZWCAD immediately.

### □ Compatible Resource Files

All resource files used by mainstream CAD platforms can be used with ZWCAD. This includes Windows TTF and AutoCAD SHX font files, linetype (.lin) files, hatch pattern (.pat) files, slide (.sld) files, and unit (.unt) files.

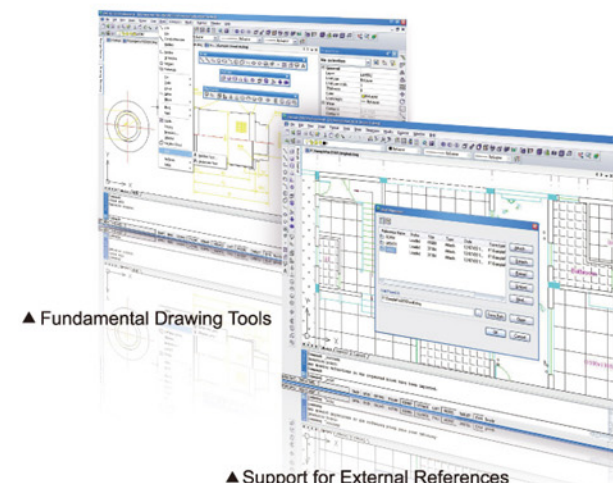
### □ Support for Windows Operating Systems

In general, ZWCAD works well with Windows XP, Windows 2003, Windows Vista, Windows 7, etc.



▲ Friendly User Interface

## ➔ Visualizing Ideas Through Drafting and Detailing



▲ Fundamental Drawing Tools

▲ Support for External References

### □ Fundamental Drawing Tools

Create precise 2D and 3D geometry entities, such as lines, polygons, ellipses, cylinders, and spheres.

### □ Flexible Text Placement Options

For the annotation of drawings, ZWCAD provides both multi-line text and single-line text capabilities, with the option of setting an unlimited number of text styles. With ZWCAD 2010's new in-place text editor, what you see is what you get.

### □ Support for External References

Insert entire DWG files as external references. This lets everyone on your team collaborate on big designs, yet won't increase the drawing file size by much.

### □ Efficient Blocks and Attributes

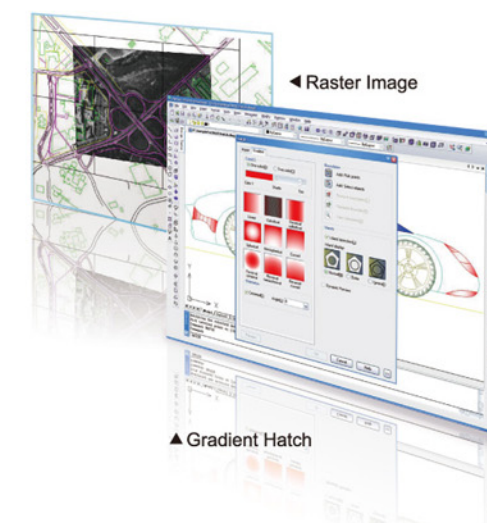
Define multiple objects as wholes to create blocks (symbols). With these you can standardize drawing components, and efficiently reuse them in other drawings. Attributes allow you to attach data to blocks, such as inventory numbers, pricing, and detailed descriptions.

### □ Raster Image

Insert raster images in drawings to better show off your designs, or to trace over old paper drawings. Various kinds of images can be attached, including those in BMP, TIF, GIF, JPG, PNG, PCX, or TGA format. Once attached, the images can be varied in their brightness, contrast, and fading. In addition, drawings can be exported to a variety of raster formats for use in desktop publishing and Web sites.

### □ Hatches, Fills, and Gradients

Hatch areas to define specific meanings. You can use solid fills, gradient fills, or predefined fill patterns. ZWCAD supports .pat pattern files from mainstream CAD programs.



◀ Raster Image

▲ Gradient Hatch

### □ OLE

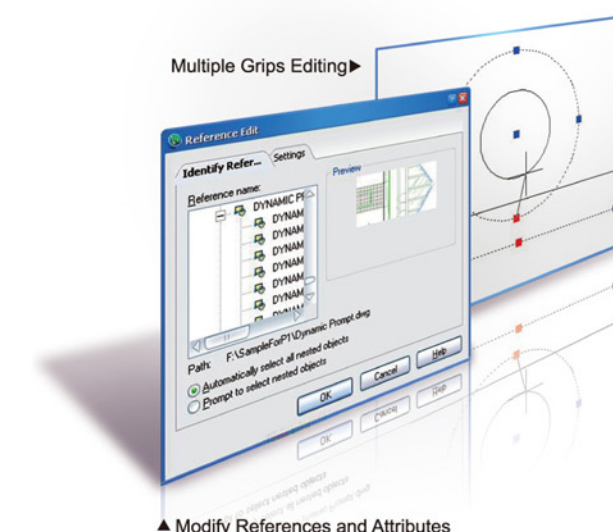
Insert linked or embedded objects into the current drawing to take full advantage of information from other applications. You can insert movies, spreadsheets, formatted documents, and more.

### □ Multiple Grips Editing

Multiple grips editing enables you to work with more than one grip at a time. This lets you stretch and move objects through multiple grips, keeping the geometry properly constrained between objects.

### □ Modify References and Attributes

In-place reference editing allows you to modify externally referenced drawings and to redefine block definitions, without needing to open external DWG files.



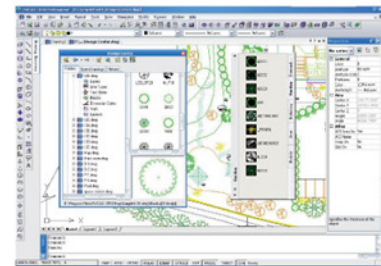
▲ Modify References and Attributes



## ➔ Boosting Productivity with Management Features

### □ Design Center

Design Center allows you to access any CAD resource stored on your computer or on the local network. You can apply content to the current drawing copied from dimension styles, blocks, text styles, line types and layers found in other drawings.

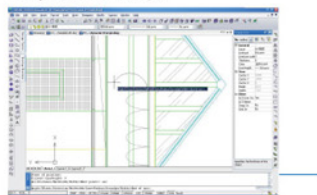


▲ Design Center & Tool Palettes

### □ Tool Palettes

Palettes provide an efficient method for organizing, sharing, and storing blocks, hatches, and other tools, including those provided by third-party developers.

### ▼ Dynamic Prompt



### □ Dynamic Prompt

Dynamic prompts display tooltips that report useful information near the cursor. The data is dynamically updated as the cursor moves, which helps you keep your focus in the drafting area.

### □ AutoTrack

AutoTrack combines polar tracking and object snap tracking so that you can easily draw objects at specific angles or in exact relationship to other objects. ZWCAD automatically generates alignment paths to let you see geometric relationships. This makes tasks easier to accomplish, and designs more precise.

▲ AutoTrack

### □ Realtime Pan and Zoom

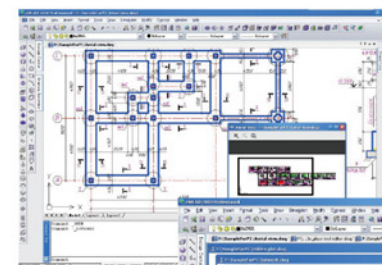
Simply use the mouse to dynamically change the magnification (zoom) of the drawing, and to reposition the view (pan) of the drawing area.

### □ Aerial View

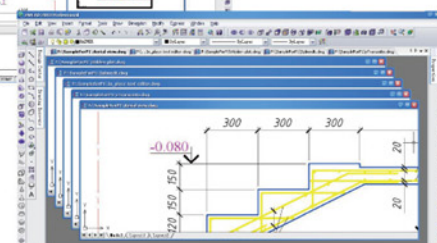
Pan and zoom large drawings quickly with the miniature aerial view window that displays the entire drawing at all times.

### □ Multiple Document and Tab Environments

You work more efficiently with ZWCAD's Multiple Document Environment (MDE), which allows you to open up to 255 files in a single session. In addition, ZWCAD provides a Multiple Document Tab (MDT) mode, which lets you quickly select tabs to access multiple open documents.



▲ Aerial View



▲ Multiple Document and Tab Environments

### □ Layers and Properties

Create layers and manage layer properties easily and efficiently. Control how objects are displayed and plotted. Use layers to reduce the visual complexity of drawings, and improve display performance.

### □ Multiple Redo and Undo Facility

Backtrack your recent actions more conveniently and efficiently. The undo/redo list allows you undo/redo several actions at once or just a single action at once.



### □ Quick Dimension

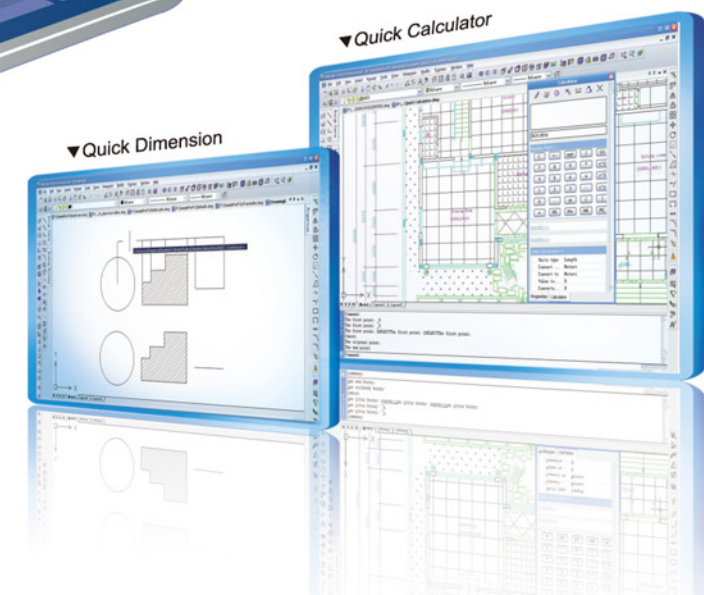
Create and edit a series of dimensions quickly, including baselines and continued dimensions, radius and diameter dimensions, and ordinate dimensions. ZWCAD's quick dimension mode handles a variety of object types.

### □ Quick Calculator

The built-in calculator features functions specific to CAD, such as geometric calculations, a units conversion area, and user-defined variables, in addition to standard mathematical functions.

### □ Quick Select

You can create selection sets that include and exclude objects based on criteria you specify, such as their color, layer names, and locations.





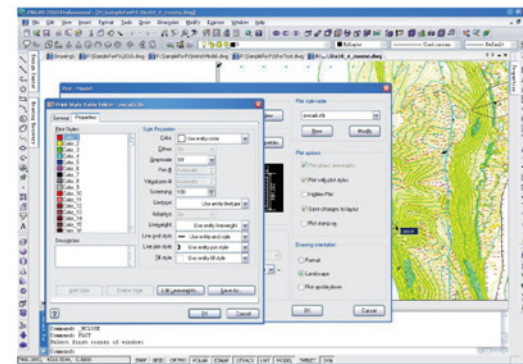
## Powering Communication with Collaboration Features

### Publishing and Plotting

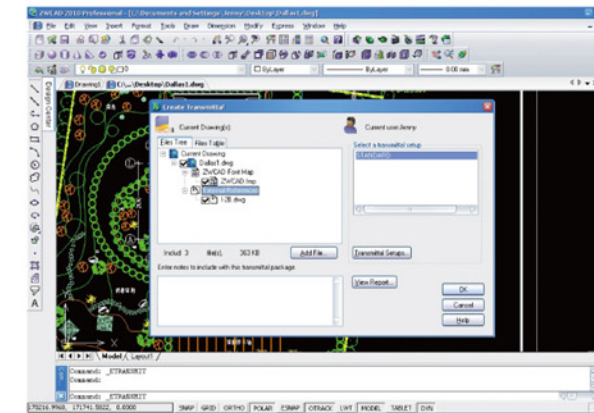
Publish drawing sheets as DWF files or to plotting devices with different plot styles. Alternatively, you can plot drawings to a variety of file formats, including EPS.

### Export Options

With Export command you can save drawings in a variety of file formats. This is useful for placing drawings in other application programs.



▲ Plotting



▲ eTransmit

### Convenient JPEG and PNG Output

Optimized JPEG plotter and PNG plotter configurations can be found in the plot dialog box. This allows you to easily plot drawings as high quality JPEG or PNG images.

### eTransmit

eTransmit improves collaboration between clients by collecting all related drawing and support files in a single package. The package can include drawings, images, external references, and fonts.

## Customizing and Programming ZWCAD

### Customizing the Interface

It is easy for you to customize the ZWCAD user interface. You can modify menus, toolbars, keyboard shortcuts, and command aliases to meet your particular needs or company standards.

### Programming with ZWCAD

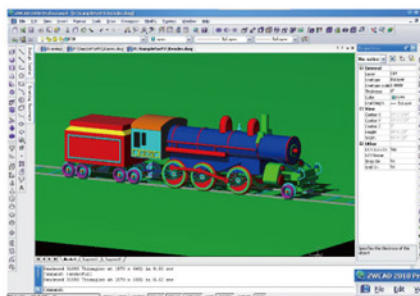
ZWCAD provides convenient application programming interfaces, such as LISP (similar to AutoLISP), VBA, SDS (similar to ADS), and ZRX (ZWCAD Runtime Extension, similar to ARX). With these interfaces, you can develop specialized design and drafting applications to fit your needs, perfectly.

### Improved Layouts

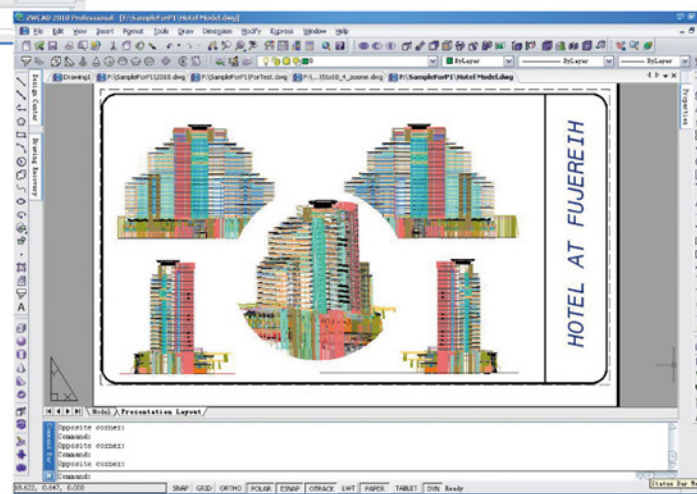
In paper space, the white layout is now provided as the default. You can, however, specify any background color you like.

### Realistic Renderings

3D models can be rendered using a variety of materials and multiple light source to generate high-quality, photorealistic images.



▲ Realistic Renderings



▲ Improved Layouts



▲ Customizing the Interface



▲ Powerful APIs



## ➔ What's New in ZWCAD 2010

### □ Memory Optimization

You'll work faster and more efficiently because the Memory Optimization with compressed processing and new optimized arithmetic improves the efficiency of commonly-used commands resulting in greater speed and stability, especially when of dealing with large drawings. Viewing operations like zoom, pan, and redraw operate more smoothly.

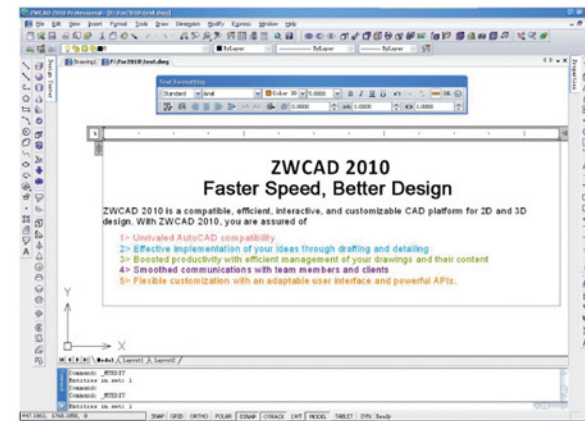
### □ Improved Functions

#### ◆ In-Place MTEXT Editor

ZWCAD 2010's newly-developed In-Place MTEXT Editor will help you focus on your design and make your work experience more efficient with new and improved functions for your convenience, such as, a new text formatting toolbar, a new dialog box for formatting paragraphs, and a new display options menu. Thus, you can create and edit text objects freely as in other professional word processing software.

#### ◆ Splinedit

More editing options are available in ZWCAD 2010 for changing the shape of Spline objects. You can edit fit data, adjust refinements, change directions and move vertices, which enables you to work more accurately with Spline.



▲ In-Place MTEXT Editor

### □ Enhanced APIs

#### ◆ LISP/ VBA

In ZWCAD 2010, APIs like LISP and VBA have been greatly enhanced, with a series of new functions added to the LISP Vlak and Vlr series. We've added new commands to VBA as well, such as AppendOuterLoop and AppendInnerLoop, which allows you to have seamless connection with other applications.

#### ◆ ZRX—Another Powerful Application Programming Interface

ZRX is a new application programming interface (API) that is similar to ARX. As one of the most powerful APIs in ZWCAD, ZRX enables developers to directly access DWG database, customize entities and migrate their former ARX applications to ZWCAD quickly.

### □ Better Integration

ZWCAD 2010 is designed to seamlessly integrate with Windows 7, which strengthens your communication with Windows Operating Systems.



▲ Compatible with Windows7

## ➔ Our Solutions Provide Success for Customers

Since its inception, ZWSOFT has been consistently innovative, always striving to develop the best CAD solutions dedicated to a variety of industries. Now over 180,000 clients worldwide use our solutions and benefit from reduced costs, more efficient timing, and top quality performance.

## ➔ ZWCAD is Employed in Many Industries



▲ Automotive

▲ Education

▲ Transportation

▲ Architecture, Engineering & Construction



## ➡ ZWCAD Helps Clients Achieve their CAD Design Goals

"We are very pleased with ZWCAD's performance over the six months we have been using it. And we will continue to use it. This is the first time we have found a real alternative to our existing CAD software system!"

-----Mr. Collins

Director of Michael Collins Associates

Established in 1988, MCA provides a full range of architectural, interior design, master planning, and project management services. Using CAD software, MCA generates architectural and interior design services, and produces architectural design and construction drawings. This firm has about 30 CAD workstations that have been running another CAD system for the last twenty years. In 2009, however, they converted four of the workstations to run ZWCAD for managing production.



"ZWCAD has the powerful features and high performance that we were looking for. Our engineers find that they can work very easily and conveniently with it, due to its compatibility with and similarity to AutoCAD. What's more, we found great innovations in ZWCAD, such as its dynamic input capability."

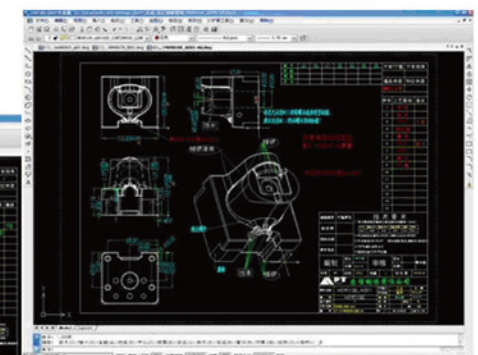
-----Mr. Xie Ye Qing

Director of Altrust's R&D Department.

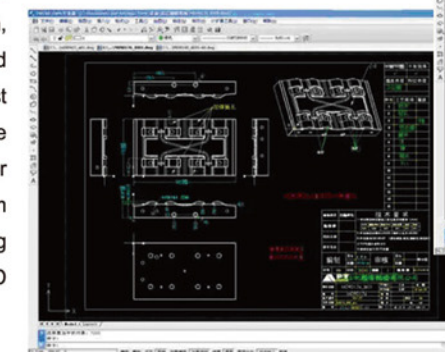
Altrust Precision Tooling Co., Ltd. is one of the top 10 mold manufacturers in Asia and is ISO-certified. For more than 15 years the company has specialized in product design, mold making, machining, assembly, and prototyping. Beginning in February 2006, Altrust evaluated ZWCAD through a series of intense benchmark tests. It found ZWCAD to be superior in the areas of DWG compatibility, program stability, speed, and five-star service. Following the successful outcome, Altrust selected ZWCAD as the company's primary design tool.



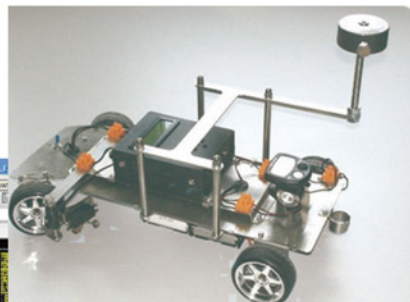
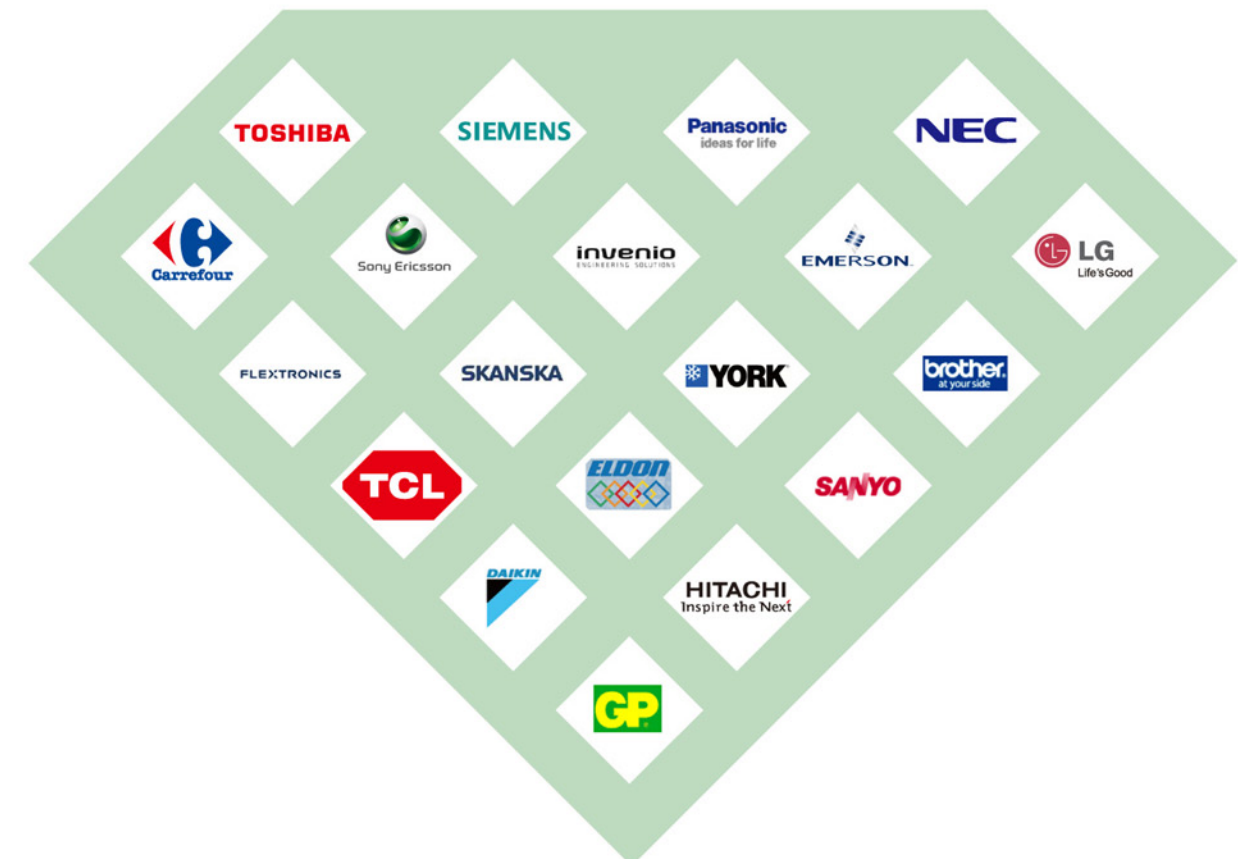
▼ This drawing shows the processing chart of a liquid soap bottle mold. Drawn with ZWCAD.



◀ This drawing shows the processing chart of an electronic die mold. Drawn with ZWCAD.



## ➡ ZWCAD's Valued Customers



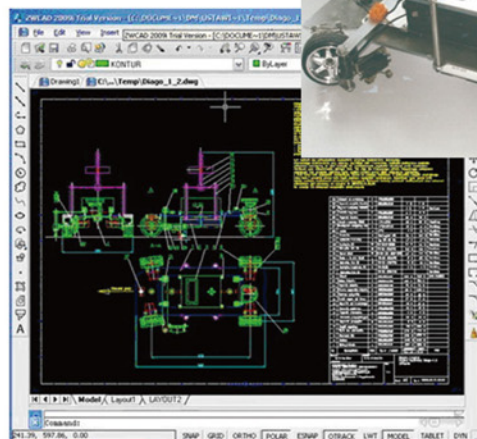
"ZWCAD meets our requirements. Without it, I don't think we could get more business or complete more work faster. The reasonable price of ZWCAD software is a significant contribution to our profitability."

-----Jerzy Mydlarz

Managing Director of Invenio Poland

As a part of Invenio International Group, Invenio Poland provides a full range of product design services, manufacturing, and engineering services. Involved principally in the automotive industry, specifically in the components sector, Invenio adopted ZWCAD mainly for tooling design.

**invenio**  
ENGINEERING SOLUTIONS



▲ The drawing illustrates the prototype of a vehicle designed in ZWCAD.



### → Our Commitment to Five Star Service

ZWSOFT is fully aware that the needs of our clients go far beyond the software package. Together with our worldwide distributors, we offer our customers a variety of value-added services. To keep their ZWCAD systems up and running, ZWSOFT offers the following premium services and support plans.



### → ZWCAD Technical Support Channels

**Technical Email Support:** [tech@zwcad.com](mailto:tech@zwcad.com)

We respond to customers in three working days after receiving their email.

**Instant Messaging Support:**

**MSN:** [tech\\_zw@hotmail.com](mailto:tech_zw@hotmail.com) **Skype:** [tech\\_zw](#)

Available every working day between 8:30 a.m. and 5:30 p.m. (GMT+8).

**Online Support At [zwcad.org](http://zwcad.org):**

◆ Live Technical Support

Go to [www.zwcad.org](http://www.zwcad.org), and then click the icon for Live Technical Support. This service is available every working day between 8:30 a.m. and 5:30 p.m. (GMT+8).

◆ Support Section

Consult the Support section of the ZWCAD website for more information, such as demonstrations, documentation, FAQs, and so on.

◆ Help Forum

Visit [www.zwcad.org/forum/default.asp](http://www.zwcad.org/forum/default.asp) to ask questions or share expertise in ZWCAD with other users. Or, you can go to ZWCAD Club ([www.zwcadclub.com](http://www.zwcadclub.com)), an online community sponsored by ZWSOFT.

**Local Technical Support**

To access localized technical support, please send requests to [sales@zwcad.com](mailto:sales@zwcad.com) or [tech@zwcad.com](mailto:tech@zwcad.com), or locate local resellers at <http://www.zwcad.org/partner.php>.

### → Complete Online Support Systems from ZWSOFT

- ◆ 30-day free trial complete with online technical support.
- ◆ Value-added consulting before and after the software is purchased.
- ◆ Comprehensive global support channels that range from Web sites and forums to instant messaging and email.

### → Localized Services by International ZWCAD Distributors

- ◆ Global network of over 170 ZWCAD distributors who assist clients in more than 30 languages throughout the world.
- ◆ Localized consulting & support provided by ZWCAD distributors, e.g., on-site demonstrations and instructions.

### → Questions? Get Your Answers Here

#### □ FAQ (Frequently Asked Questions)

**Q: What are the limitations of ZWCAD trial version?**

A: The ZWCAD trial version allows you to evaluate all of ZWCAD's functions for 30 days. The software continues to work following the evaluation period, but is limited in four areas: (1) the Export function is disabled, (2) all plots contain a watermark, (3) drawings can not be saved in DXF format, and (4) drawings with more than 8,000 entities cannot be saved. All other functions operate as before.

You can download the trial version of ZWCAD from our Web site at [www.zwcad.org](http://www.zwcad.org). You can also access it from popular software download sites such as [www.download.com](http://www.download.com) and [www.tucows.com](http://www.tucows.com).

**Q: What file formats can I use with ZWCAD 2010?**

A: ZWCAD 2010 opens and saves drawings in the following formats: DWG, DXF, DWF, and DWT. In addition, the software can export drawings in the following raster and vector formats: BMP, WMF, SVG, DWF, EPS, PDF, and SAT.

**Q: Can I develop my own applications with ZWCAD? Can I run AutoLISP programs directly in ZWCAD?**

A: Yes, ZWCAD includes several APIs for developing applications of your own: LISP (similar to AutoLISP), VBA, SDS (similar to ADS) and ZRX (similar to ARX). In addition, most AutoLISP applications can be run by ZWCAD with just little or no modification.

**Q: Is an academic version of ZWCAD available?**

A: Yes, we are glad to provide an academic version of ZWCAD at low cost. The academic version has the same set of powerful features as the regular retail version of ZWCAD Professional. The academic version is offered at a discount to the staff and students of accredited academic institutions; it is not meant for commercial use. To purchase licenses of the academic version of ZWCAD, please contact the local dealer nearest your school, or contact us directly at [sales@zwcad.com](mailto:sales@zwcad.com).

**Q: What are the system requirements of ZWCAD?**

A: The system requirements for ZWCAD are as follows:

Processor: 800MHz Pentium III or faster

RAM: 512 MB (minimum recommended)

Video: 1024 x 768 VGA with True Color (minimum recommended)

**Q: How can I get pricing and purchasing information for ZWCAD?**

A: You can obtain ZWCAD price quotations and make purchases from your local dealer. For more details about dealers and any other information, please contact us at [sales@zwcad.com](mailto:sales@zwcad.com) or visit our Web site at [www.zwcad.org](http://www.zwcad.org).



## → ZWCAD is Everywhere

### ZWCAD Worldwide

#### □ ZWCAD Overseas Events

During 2008, ZWSOFT attended over ten international fairs and exhibitions. In addition, local distributors undertook initiatives in promoting ZWCAD at exhibitions and seminars. In 2009, ZWSOFT and its partners continued to showcase its customized CAD solutions to industry professionals by attending overseas exhibitions and seminars in more than 30 countries.

- ① Interview by a Local TV Station at GITEX, Saudi Arabia
- ② ZWCAD at ARCHITECT 2009, THAILAND
- ③ ZWCAD at Hannover Messe, Germany
- ④ ZWCAD at TURKEYBUILD 2009
- ⑤ ZWCAD at DMS, Japan
- ⑥ ZWCAD at Building & Construction Indonesia
- ⑦ ZWCAD at EXPO CIHAC 2009, Mexico
- ⑧ ZWCAD at Construya Vivienda 2009, Venezuela
- ⑨ ZWCAD Seminar in Brazil
- ⑩ ZWCAD Seminar in Portugal
- ⑪ ZWCAD Seminar in Odessa, Ukraine
- ⑫ ZWCAD Seminar in Tokyo



#### □ ZWSOFT Global Partner Conference 2009

Held between August 25 and 28 in Guangzhou, China, ZWSOFT Global Partner Conference 2009 (GPC) was the first gathering to provide a forum for ZWCAD's partners from all over the world to connect with each other and with ZWSOFT staff. The conference was a great success, with roughly 100 attendees from over 30 countries and regions.

- ① Official Meeting
- ② Official Meeting
- ③ 2009 ZWCAD Excellent Distributors
- ④ Free Talk Sessions
- ⑤ Banquet-Chorus
- ⑥ Tea Break
- ⑦ Signature
- ⑧ Banquet-Face Changing Folk Art





## ZWCAD in China

### China CAD Software Vendor Alliance

China CAD Software Vendor Alliance (CCSVA), led by ZWCAD Software, was established on May 27, 2008. The aim of the alliance is to strengthen cooperation and communication between CAD developers in China, and to provide advanced technologies and services to customers.



### Members of CCSVA



### China CAD Software Solution Tour

As the leading member of China CAD Software Vendor Alliance, ZWSOFT launched its first China CAD Software Solution Tour in all major cities in China in 2008. In 2009, ZWSOFT and other CCSVA members continued to highlight their professional CAD solutions to industry professionals by organizing a series of seminars all over the country.



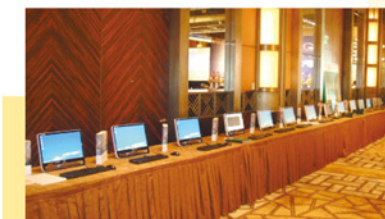
▲ Guangzhou



▲ Chengdu



▼ Xi'an



▲ Shanghai



▲ Xiamen



▲ Changsha

Since its inception in 2008, the alliance has already made significant achievements. Many applications based on the ZWCAD platform have been released to meet the needs of national customers. Examples include ExplorerSoft, Tsinghua Sware, Hongye Technology, and Bochao Soft.