

2010-12-8



**ZWSOFT**

**Differences between  
Dongle Encryption and Soft Encryption**

**ZWCAD 2011**

ZWCAD Technical Support Team

## Differences between Dongle Encryption and Soft Encryption

In terms of different encryption methods, we provide two ways to activate ZWCAD software---with Dongle or with Soft Key. Here are the differences you should note in activating software and managing licenses.

### 1. “Key” to Activate

#### ◇ Dongle Encryption

A **Dongle** with a **license code** is expected to activate ZWCAD.



#### ◇ Soft Encryption

An **Activation ID (Soft Key)** is expected to activate ZWCAD.



### 2. Managing Licenses

#### 2.1 Stand-Alone Version

##### ◇ Dongle Encryption

- ✓ There is **no License manager** for stand-alone Dongle user, as it is so easy to manage the authorization.
- ✓ Just **plug in** the dongle to the PC which they want to activate, and type the License Code. **Plug out** the dongle when you want to stop the authorization.

##### ◇ Soft Encryption

- ✓ Please note that there is a **License manager** for stand-alone soft key user, with which

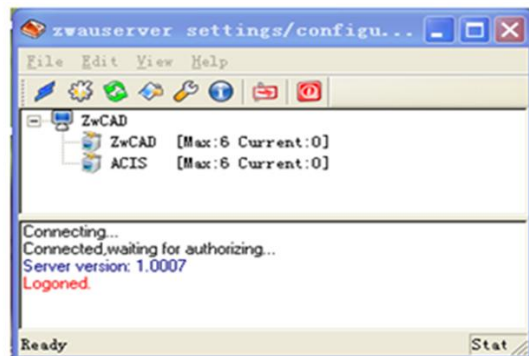
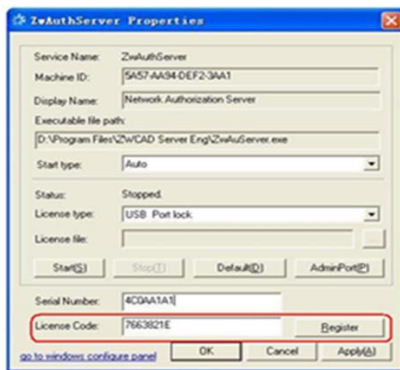
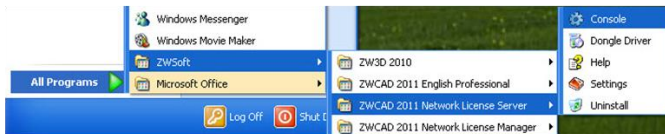
- they can manage the license.
- ✓ If you want to switch the license to the other PC or reinstall the software or the system, you need to **return the license** with it first.
- ✓ Except for activation and return license, with the License Manger, you can **borrow** license from authorized server.



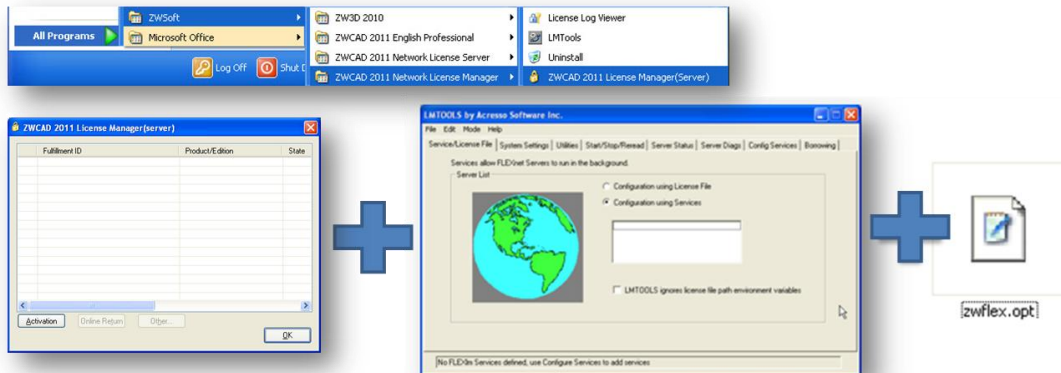
## 2.2 Network Version

We provide tools for managing network licenses which should be installed in the server, **ZWCAD Network License Server** is for Dongle Encryption and **ZWCAD Network License Manager** is for Soft Encryption. They both can distribute license to workstations, constraints license. Even though workstation can **borrow** license from soft encryption authorized server, dongle encryption has no borrow function.

- ✧ Dongle Encryption **ZWCAD Network License Server**



- ✓ Workstations should be in the same network segment with the authorized server
- ✓ It can constraint IP range that can get the floating license
- ✓ It can kick out the workstation by strong arm
- ✧ Soft Encryption **ZWCAD Network License Manager**



- ✓ Workstations in different network segments can get floating license from the authorized server by configuring VPN
- ✓ Workstations can borrow license from authorized server for specified time period which allow them disconnect from the server after authorized.
- ✓ With the opt file, the server can restrict IP range that gets the floating license
- ✓ Call back the floating license by configuring variable “time out”. When the workstation has no operation with the program for a long time beyond specified “time out”, it will automatically lose the authority for the other workstation.
- ✓ One network license can be split and managed in one or more servers.

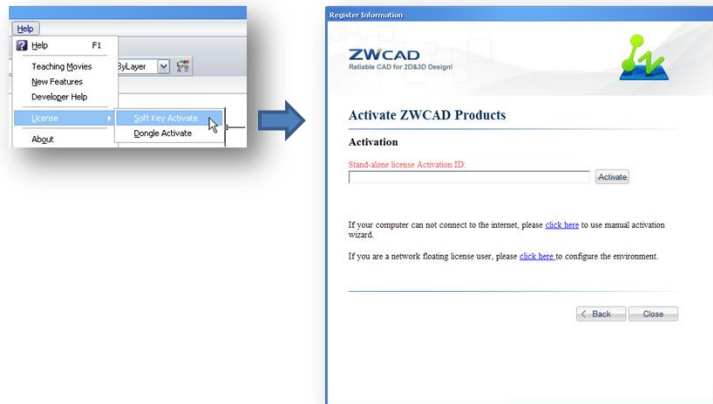
### 3. Activation UI

#### 3.1 Stand-Alone version

- ✧ Dongle Encryption Activation UI



- ✧ Soft Encryption Activation UI

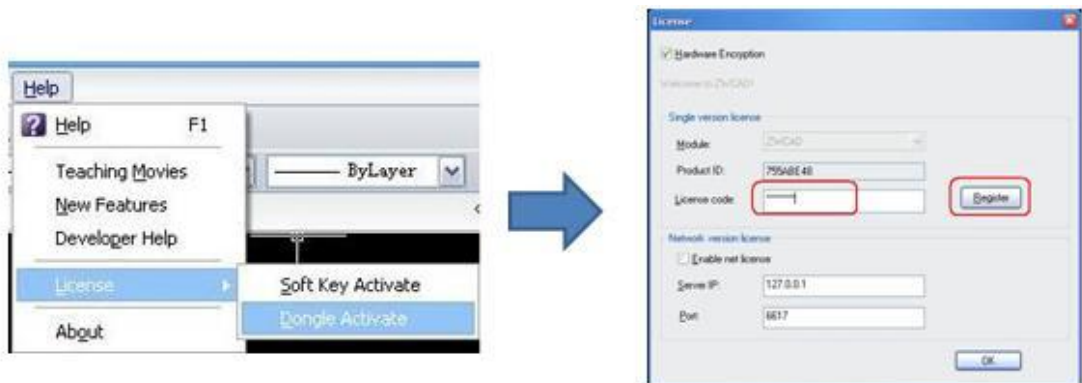


## 3.2 Network Version

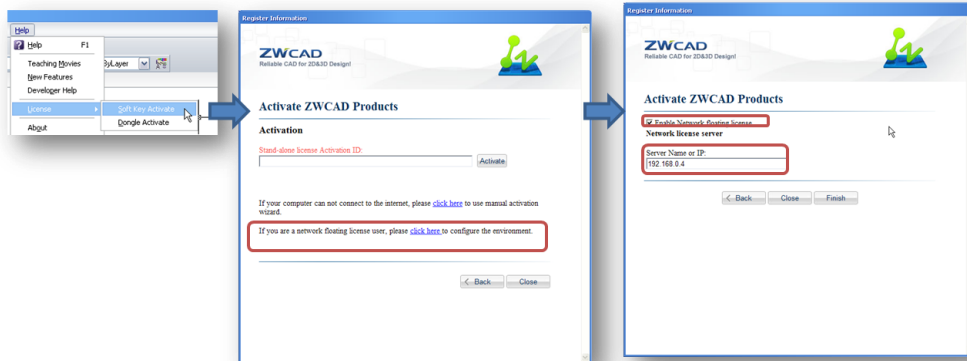
For network version, you have to 1> authorize the server (install license managing tool we provide first), and 2> configure the server so that the 3> workstations can get floating licenses or borrow licenses (for soft encryption only) from the server.

Activation UI on the server please refer to Chapter 2.2, description below is for introducing the activation UI on the workstation.

- ✧ Workstation get license from Dongle authorized Server



- ✧ Workstation gets license from Soft Key authorized Server



## 4. Upgrade

### ◇ Dongle Encryption

#### ✓ Dongle to Dongle

If you want to upgrade to higher version while still using the dongle, you just need to send us the Product ID and the license code, we will generate the new license code for you. There is no need to change dongle.

#### ✓ Dongle to Soft Key

If you want to upgrade from dongle to higher version using soft key, you have to send us the dongle, and we will send you the soft key for soft encryption.

### ◇ Soft Encryption

#### ✓ Soft key to Soft key

You have to return your license and send us the soft key (activation ID). We will generate a new soft key for the higher version ZWCAD.

## Summary

As you see, there are many differences between Dongle Encryption and Soft Encryption. Different features bring different conveniences.

For stand-alone version, it seems much easier to manage the authority, as Soft key user has to return license when changing computer or uninstall program or format. On the other hand, soft key itself is a serial of characters which can be transferred easily and can be used with less limits such as space and time and people, but the dongle and its license code should go along with the one who wants to get the authority.

For network version, the advantage of soft encryption is obviously. It can be used in the much more compliant network environment. Workstations within and without the server network segment can both get floating license, but same network segment is expected for dongle encryption. Furthermore, soft encryption provides "borrow" and "time out" setting which are unique features. Network license of Soft encryption can be split and managed in one or more servers which are unable to realize in Dongle encryption version.