

About ZWCAD+

ZWCAD+, the next generation of ZWCAD, is developed by ZWCAD Design Co., Ltd., a wholly-owned subsidiary of ZWSOFT. It is a cost-effective, DWG file format compatible CAD solution that provides innovative, collaborative and customizable features for both the AEC and MCAD industries.

ZWCAD+ is now available in 15 languages, including Simplified and Traditional Chinese, Czech, English, French, German, Italian, Japanese, Hungarian, Korean, Polish, Portuguese, Spanish, Russian, and Turkish.

ZWSOFT (ZWCAD Software Co., Ltd.) is a world renowned CAD/CAM solutions provider for the AEC and MCAD industries, with over 180,000 clients across 80 countries. ZWSOFT's products have continuously satisfied the needs of 2D and 3D designers and professionals for over a decade. Some of ZWSOFT's major clients include Siemens, Sony Ericsson, Panasonic, Carrefour, and Saint-Gobain.

ZWCAD DESIGN CO., LTD.

Add: Rm. 508, No. 886, Tianhe North Rd., Guangzhou, 510635, China
Tel: +86-20-38259726 **Fax:** +86-20-38288676
E-mail: sales@zwssoft.com

www.zwssoft.com

ZWCAD+ Reseller

All trademarks, trade names or company names referenced herein are used for identification only, and belong to their respective holders.

Copyright 2012 ZWCAD Software Co., Ltd. All rights reserved.

Reproduction in any form without the permission of the copyright holder is prohibited by law.

New Core New Possibilities

30-day Free Trial at
www.zwssoft.com





Top 9 Reasons to Choose ZWCAD+

1. Superior new engine

With its superior new engine, ZWCAD+ excels in memory management. It enables you to work continuously throughout the day.

2. Seamless .dwg compatibility

ZWCAD+ reads and writes .dwg files with no conversion, and offers seamless compatibility with other mainstream CAD products.

3. Efficient and powerful APIs

ZWCAD+ offers code-level API compatibility, which allows developers to port their existing applications to ZWCAD+ with ease.

4. Comprehensive drafting tools

The full-function drafting tools provided by ZWCAD+ empower your design from concept to completion.

5. Quick and compact CAD

ZWCAD+ is a light and quick CAD solution that has low hardware requirements. On average, it only takes seconds to start ZWCAD+ and open your drawings.

6. Your budget saving CAD choice

ZWCAD+ allows CAD designers to complete their drawings more efficiently at a compelling low price.

7. Friendly upgrade policy

There's no forced annual upgrade with ZWCAD+. You only pay a one-year upgrade fee when upgrading from any previous ZWCAD version to ZWCAD+.

8. ZERO relearning cost

Over 95% of experienced CAD users shift to ZWCAD+ in less than three days, and begin working with no relearning cost at all.

9. Considerate support and service

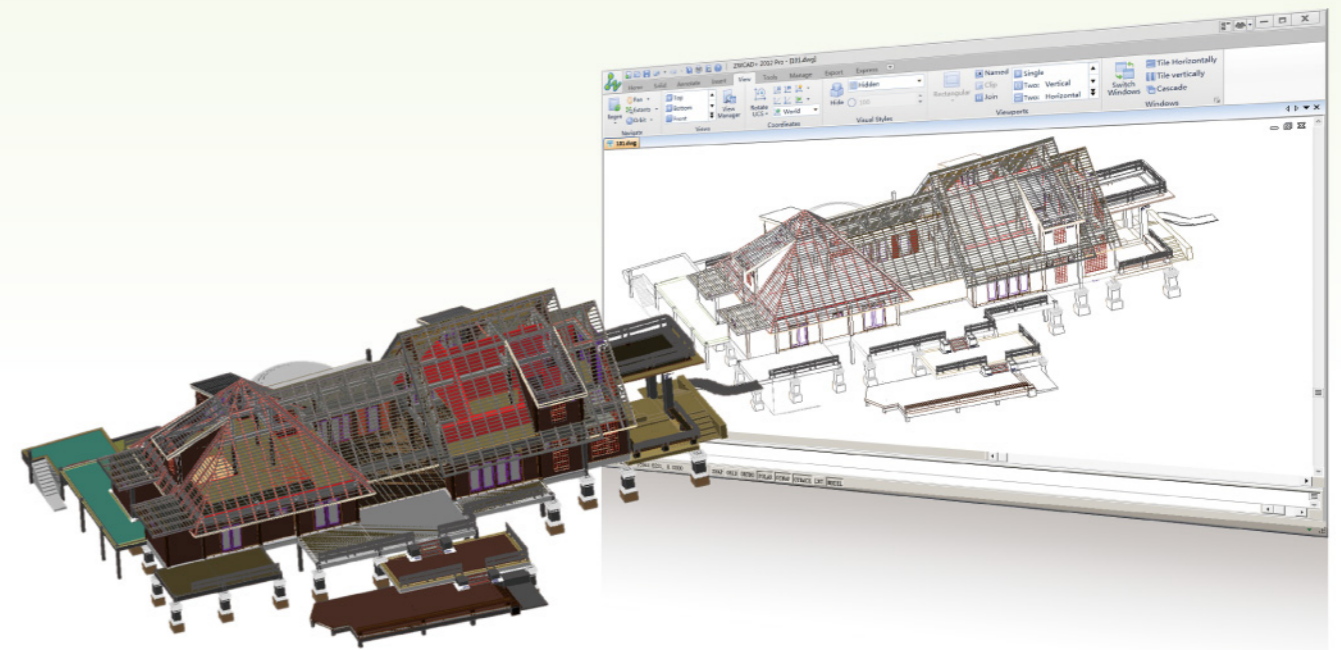
Together with our partners in over 60 countries, we provide local support and timely responses to ZWCAD+ users.

ZWCAD+ Overview

ZWCAD+ is a cost-effective, DWG file format compatible CAD solution developed by ZWCAD Design Co. Ltd., a wholly-owned subsidiary of ZWSOFT. It provides innovative, collaborative and customizable features for engineers in the AEC and MCAD industries, easing their design process.

ZWCAD+ is the next generation of the well-received ZWCAD, a proven CAD solution with over 180,000 satisfied users across 80 different countries. Now equipped with a new and superior engine, ZWCAD+ gives users greater

compatibility by reading and writing .dwg files more accurately and precisely. The new memory optimization technology allows large files that are over 100MB to be opened smoothly. Better API compatibility provides developers with a hassle-free way to port their applications ten times faster. ZWCAD+ also helps increase efficiency with a new user interface, including a more intuitive Ribbon UI and the SmartMouse. It takes your design to a whole new level.

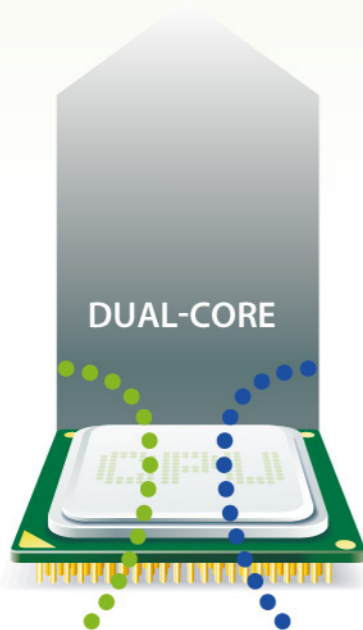
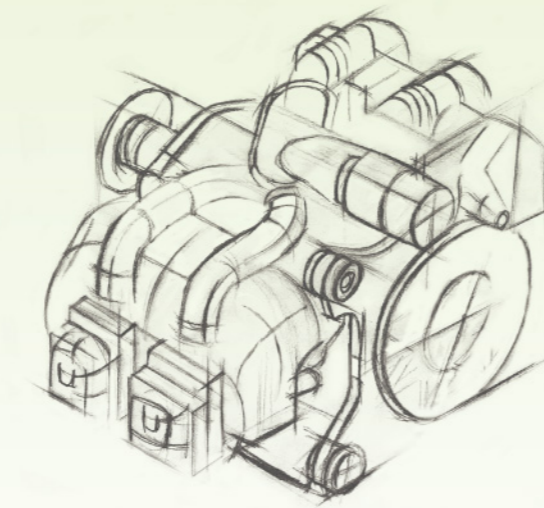


Product Introduction

ZWCAD+ New Features and Enhancements

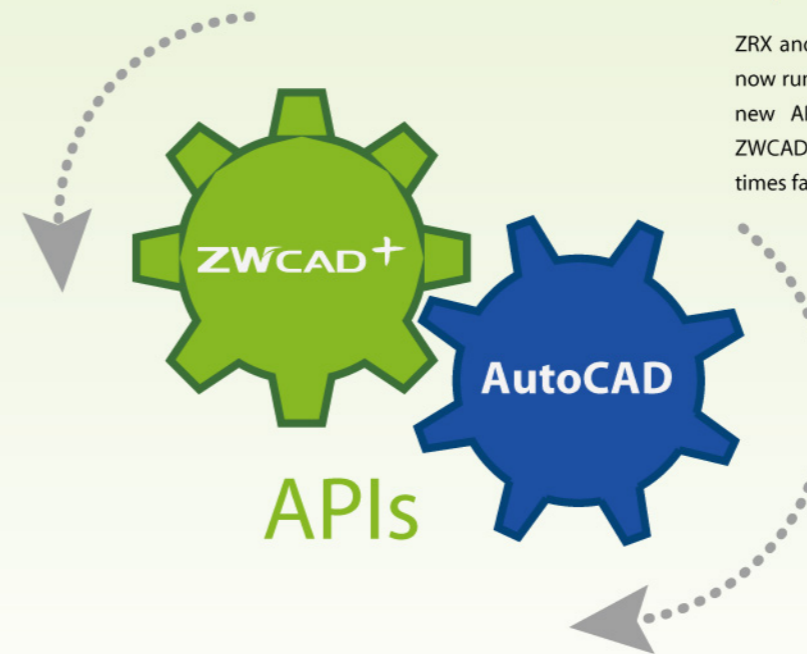
A new engine empowers you with new possibilities. *New*

ZWCAD+ is now powered by a new and superior engine developed by an experienced R&D team, most of whom are CAD veterans. The new engine ensures even greater .dwg support, better memory control, and code-level API compatibility, making it a better, faster, and more accurate CAD solution.



New memory optimization technology eases your pain with complex tasks. *New*

The new memory optimization technology enables ZWCAD+ to open any drawing with memory usage reduced by 50%. That's why it works smoothly with drawings that are even over 100 MB. It's also excellent in reducing memory accumulation, which ensures non-stop operation throughout the day. Dual-core support fully utilizes CPU resources, and empowers you to take on more complex tasks.

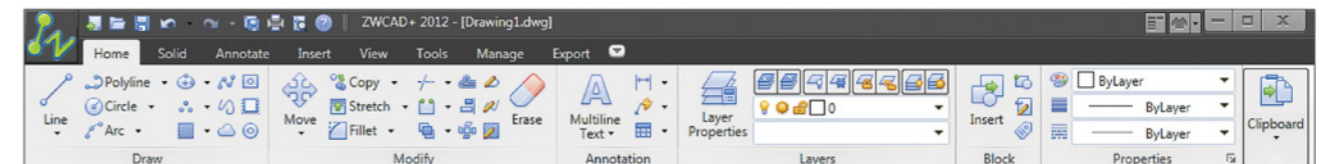


Code-level API compatibility enables you to port applications with ease.

ZRX and ARX are now code-level compatible. LISP routines can now run directly on ZWCAD+ with only a few modifications. The new APIs enable developers to port their applications to ZWCAD+ ten times faster. The ported applications run up to eight times faster when compared with ZWCAD.

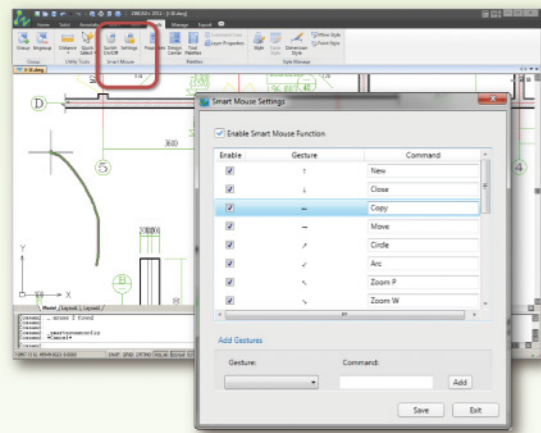
A new UI increases your productivity with a clean and optimized Ribbon. *New*

The Ribbon Interface of ZWCAD+ might just be the cleanest Ribbon UI ever. The Ribbon panel is designed to have JUST-ENOUGH buttons that all show on the panel, which brings simplicity to the whole interface. It is tailor-made to give you a fast, fluid and flexible user experience.



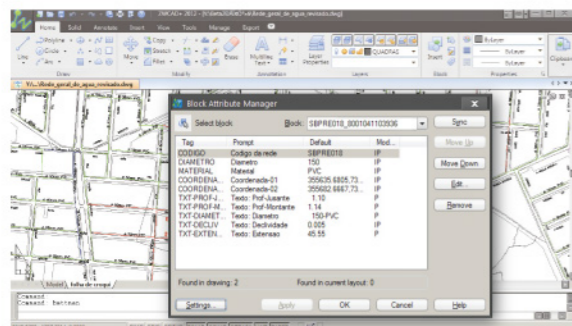
SmartMouse redefines the way of interaction with customizable features. *New*

SmartMouse, the mouse gesture feature in ZWCAD+, enables you to execute commands by just moving your mouse on a certain track to trigger frequently used commands such as New, Circle and Move. You can also customize commands for different mouse actions. It greatly helps speed up your design process.



Block Attribute Manager *New*

Now you can view, edit, and synchronize all of the attributes that are already attached to a block in the current drawing with Block Attribute Manager.



Associative Dimension *New*

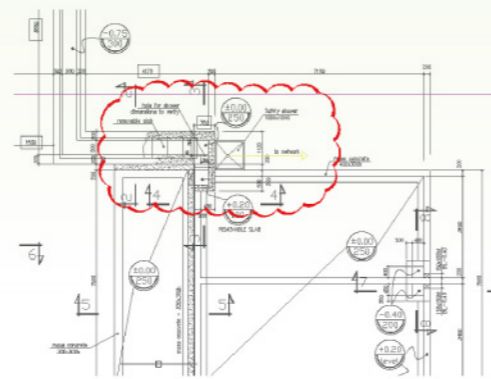
The newly added Associative Dimension allows you to update the locations, orientations, and measurement values of dimensions automatically when objects are modified.

Viewport Maximization *New*

Viewport Maximization enables you to freely edit drawings through viewport without changing the viewport's scale and scope.

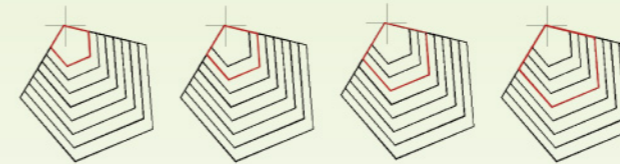
Revision Cloud

You can indicate certain areas of a drawing that contain revisions by creating a Revision Cloud in Calligraphy or Normal style. You can also convert objects such as circle, ellipse, or spline to a Revision Cloud.



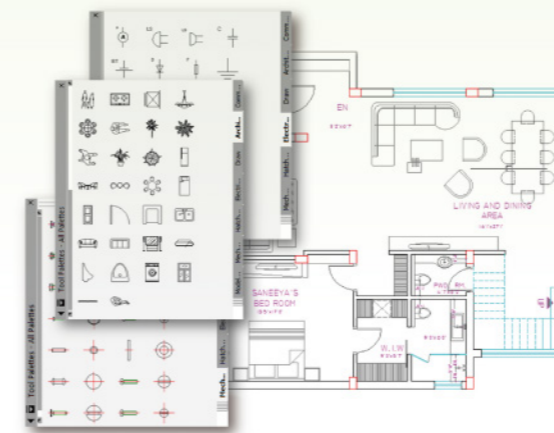
Cycle Select *New*

Cycle Select lets you select an object that overlaps other objects, and the relevant object will be highlighted, enabling you to select the right object the first time.



Tool Palettes

Tool Palettes now include the new built-in Architecture, Mechanical, and Electrical blocks in ZWCAD+. Moreover, you can import and export the palettes you've customized.



Field (Object Properties) *New*

With the now supported "Object" option for the Field command, you can create labels for your object properties, such as area and coordinates, and they will be updated automatically when the properties change.

Snap (Tracking) *New*

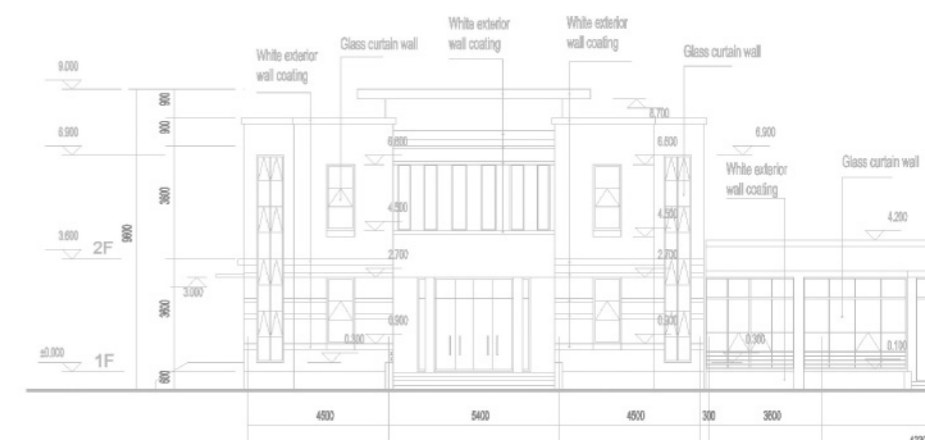
It is easy to restrict cursor movement to specified intervals to improve your design accuracy with the newly added tracking option when snapping.

Match Properties

Match Properties allows you to apply the properties of a selected object to other objects, not only in the same drawing but in different drawings as well.

Batch Processing on Layouts

You can select multiple layouts at a time and make the same modifications to them, such as delete, move and copy.



More features empower your design from concept to completion.

There are more functionalities empowering your entire design starting from the initial idea to creating, customizing, and sharing your design.

Seamless .dwg compatibility with no conversion.

ZWCAD+ reads and writes .dwg files more accurately than any previous ZWCAD version. Having been through over 50,000 extremely rigorous drawing tests to guarantee seamless .dwg compatibility, ZWCAD+ makes cross-platform communication easier than ever before.



ZWCAD+ shares resource file formats, such as TTF and AutoCAD® font files, linetype (.lin) files, hatch pattern (.pat) files, slide (.sld) files, and unit (.unt) files with other mainstream CAD products.



Fundamental functionalities fulfill your daily drawing needs.

• Draw & Modify

You can create a drawing from scratch or use a template file and modify the drawing in multiple ways.

• Annotation

Hatches, Dimensions, Tables, etc., make working with annotations easier and illustrate your ideas much more clearly.

• External References

With an External Reference, you can insert any drawing file into the current drawing. It helps you reuse drawing resources, and minimize repetitions.

• Hatch

You can hatch an area using various predefined hatch patterns, such as solid and gradient hatch, as well as create more complex hatch patterns.

• Image

Image allows you to insert or edit raster images in various image formats such as BMP, TIFF, GIF, JPG, PCX, and TARGA.

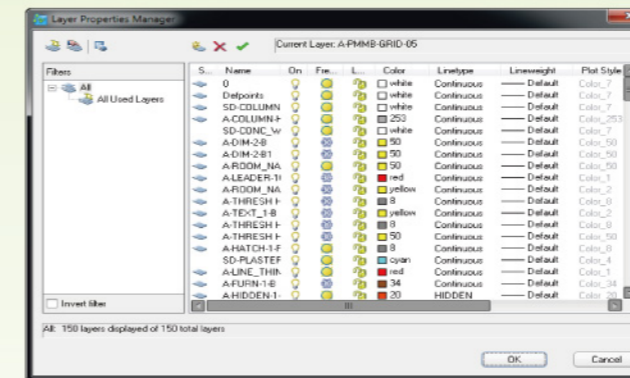
• Field

You can create a multiline text object with a field that automatically updates when the field value changes.

Advanced tools speed up your documentation and management.

• Layer Properties Manager

The Layer Properties Manager lists all the layers and their properties for batch processing. By editing the properties and applying changes, it greatly reduces the visual complexity of a drawing.



• Design Center

The Design Center allows you to search and access any CAD resource stored on your computer and other computers on the local network. You can insert the content into the current drawing, such as dimension styles, blocks, text styles, line types, and even layers from other drawings.

• Tool Palettes

Tool Palettes provide an efficient way to organize, share, and store tools, such as blocks, hatch patterns, and entities, including those from third party developers.

• File Compare

File Compare helps you spot even the most minor differences between two similar drawings by highlighting the differences with colors. You can easily find the variation between blocks, attributes and texts. Also, File Compare allows you to customize the comparison settings, such as colors and filters.

Powerful collaboration functions help you communicate easily with others.

• Publish

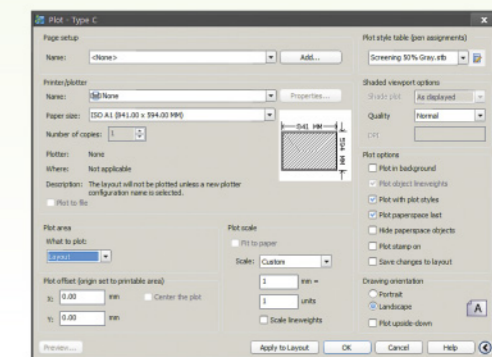
With Publish, models and layouts can be published to a single or multi-page DWF file or plotter, allowing you to share drawings with others safely and quickly.

• STB/CTB

You can use the Plot Style Manager to add, delete, rename, copy, and edit plot style tables. Plot style tables, such as color-dependent (CTB) and named (STB) plot style tables, can be converted from one to the other depending on the plot style method that the drawing is currently using.

• Plot Manager

You can plot drawings to files or to paper. Multiple options help you to fine-tune the results, such as specifying the paper size, setting the plot scale, selecting a plot style, or adding a plotter.



• Export

Export enables you to save the objects in a drawing to many different file formats. It helps you communicate drawing information with other applications, such as ZW3D and Photoshop.



ZWCAD+ VS ZWCAD2012 VS ACAD2012

Features	ZWCAD+ 2012		ZWCAD 2012		AutoCAD 2012	
	Pro	Std	Pro	Std	Full	LT
General	✓*	✓*	x	x	✓	✓
Compatibility	✓	✓	✓	✓	✓	✓
Interface	✓*	✓*	x	x	✓	✓
2D Drawing and Editing	✓*	✓*	✓	✓	✓	✓
Annotation	✓*	✓*	✓	✓	✓	✓
Layer	✓*	✓*	x	x	✓	✓
Xref, Block, and Attribute	✓*	✓*	✓	✓	✓	✓
Advanced	✓*	✓*	✓	✓	✓	✓
3D	✓	x	✓	x	✓	x
Programming	✓*	✓*	✓	✓	✓	x
Output	✓	✓	✓	✓	✓	✓

✓* Improved/new features ✓ Supported x Not supported

Company Introduction

About ZWCAD Design

ZWCAD Design Co., Ltd., the developer of ZWCAD+, is a wholly-owned subsidiary of ZWSOFT (ZWCAD Software Co., Ltd.). As a world renowned CAD/CAM solutions provider for the AEC and MCAD industries, ZWSOFT's

products have continuously satisfied the needs of 2D and 3D designers and professionals for over a decade. Some of ZWSOFT's major clients include Siemens, Sony Ericsson, Panasonic, Carrefour, and Saint-Gobain.

Serving users throughout the world

Together with our partners, every year we host hundreds of events globally to help our customers get the most out of their CAD experience. We will continue to introduce ZWCAD+ to CAD designers

and professionals worldwide through tradeshows, seminars and online trainings. We have also made support service easily available to you with a network of over 100 partners in your local areas.

Cooperating with global channel partners

Partnership is essential and critical to our development and business success. With close cooperation, we are creating mutually beneficial relationships and building an even greater future for ZWSOFT and our partners. ZWSOFT's Global Partner Conference (GPC), which started in 2009, has become a tradition, and it will continue to serve as an international platform for all ZWSOFT partners to get together and map out the future of our business. The annual event also offers a great opportunity to find more businesses, gain mutual trust and understanding, and meet new friends. ZWCAD+ was introduced at GPC 2012 held in February 2012, and there were various free talk sessions to further explore this new CAD software.



Working with international developers

To better serve your CAD needs, we've built a developer network for third-party developers to work on an array of add-ons. This solid network provides many different add-ons to make you design easier and more efficient. From bolts to buildings, a growing number of add-ons are able to maximize your CAD experience. With the power of

our APIs, there is no telling how much easier design may become. More than 80 applications run on ZWCAD, and this number is now dramatically increasing with the code-level compatible APIs on ZWCAD+. It makes porting your applications to ZWCAD+ much faster.